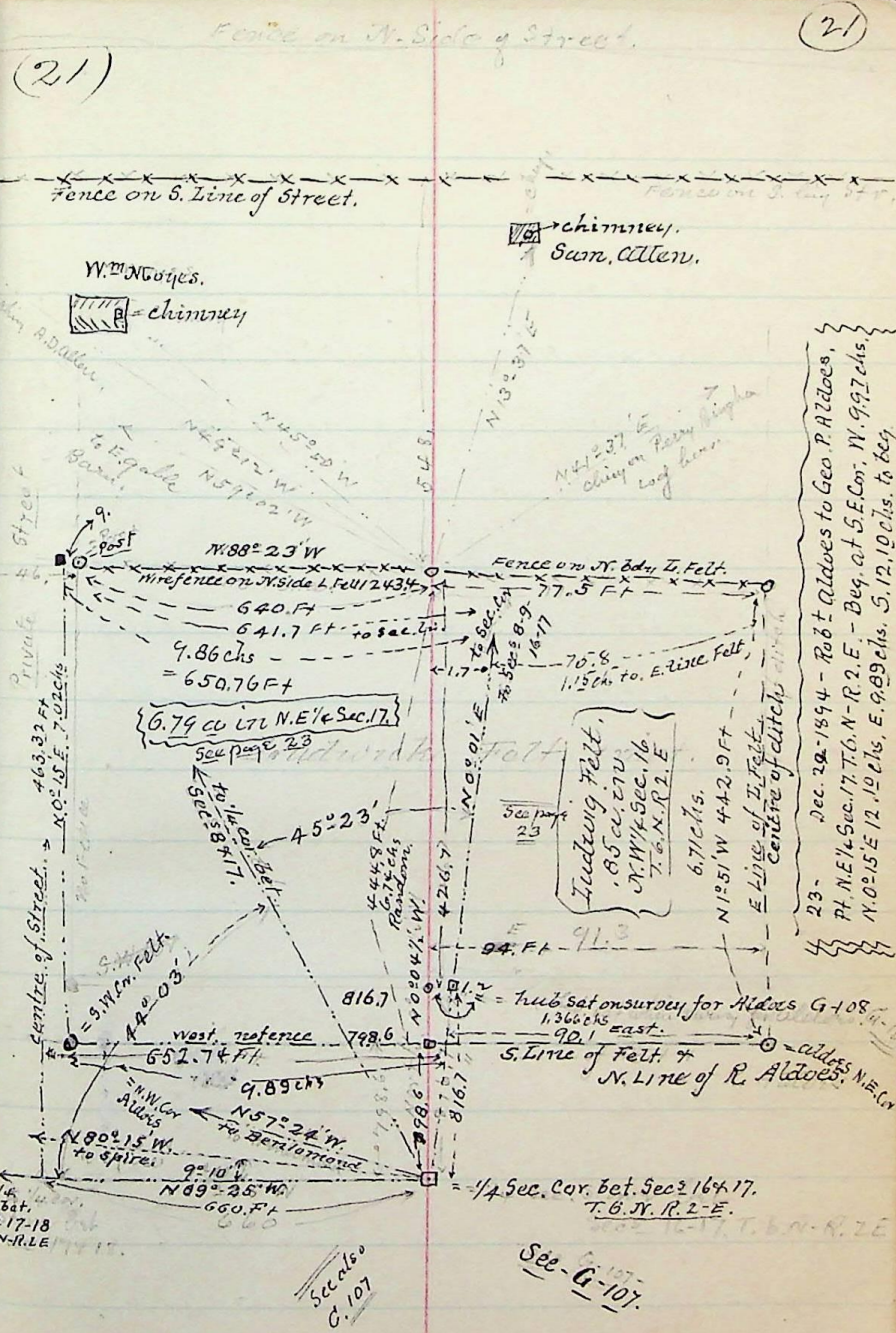


Sept. 26-1896 - made description of land in mortgage, from P.C. Geortson to P.C. Russmussen, - P.H.S.E. 1/4 Sec. 17, T.6, N. R. 2, E. Beg. 15.7 chs E of S.W. Cor. sd. 1/4 Sec. - N. 11.10 chs W 6.00 chs N. 4.36 W. 19.06 chs to cent. of 5th, S. 88° 34' E. 10.00 chs along cent. of 5th, S. 42° 36' E. 20.70 chs. - to 9.28 chs. to S. line of Sec. 11. 4.15 chs. to beg

note!!  
the line described as  
6.70 chs was run  
from S.W. cor. of 1/4 Sec. 17 to  
the center of the ditch

I made out deed description land as follows from P.C. Geortson to P.C. Russmussen and Geo. P. Aldoes. Beg. 7.82 chs E. of S.W. Cor. of N.E. 1/4 Sec. 17, T.6, N. R. 2, E. - 8.65 W. & 11.42 chs. N. 1° 54' W. 17.61 chs E 20.16 chs S. 11.12 chs to 1/4 Sec. line. N. 7.65 chs to beg



1/4 Sec. 17-18  
T.6, N. R. 2, E.

Sec also  
G-107

Sec-  
G-107

Curvey made for Inverwick Field  
Aug - 5 - 1896

24-618- Chas. Grow to Geo. P. Aldoes, P.H.S.E. 1/4 Sec. 16, T.6, N. R. 2, E. - Beg. S.W. Cor. sd. 1/4 N-12.10 chs, E. 1.366 chs. S. 3° 01' E 12.12 chs, W. 1.881 chs. to beg.